

# MicroLite & MicroLab Lite User Guide

Third Edition

December 2008

© Fourier Systems Ltd.



fourier

# Table of Contents

<b>INTRODUCTION</b>	<b>1</b>
<b>CHAPTER 1 USING THE MICROLITE</b>	<b>2</b>
1.1. Overview	2
1.2. Getting Started	2
1.3. Reading the MicroLite Display	2
1.3.1. Data Displays	3
1.4. MicroLite Working Modes	4
1.5. USB Port Connection	4
1.6. The MicroLite Battery	5
1.6.1. Battery Level	5
1.6.2. Replacing the Battery	5
1.6.3. Using the MicroLite Magnet	6
<b>CHAPTER 2 MICROLAB LITE</b>	<b>8</b>
2.1. MicroLab Lite Software Overview	8
2.2. Software Installation	8
2.2.1. System Requirements	8
2.2.2. Installation Procedure	8
2.3. Getting Started	10
2.3.1. Setting up the MicroLite	10
2.3.2. Completing the Setup	12
2.3.3. Starting Data Recording	12
2.3.4. Stopping Data Recording	13
2.3.5. Temperature Sensor Calibration	13
2.3.6. Communication Setup	14
2.3.7. Downloading Data	14
2.3.8. Saving Data	15
2.4. MicroLab Lite Basics	15
2.4.1. Opening Files	15
2.4.2. Displaying Properties	15
2.4.3. Printing a Graph	15
2.4.4. Printing a Table	15
2.5. Viewing the Data	16
2.5.1. Display Options	16
2.5.2. The Cursor	17
2.5.3. Graph Features	17
2.5.4. Cropping the Data	19

2.5.5.	Formatting the Graph	19
2.5.6.	Displaying Alarm Levels	19
2.5.7.	Changing the Temperature Units	19
2.5.8.	Adding Annotations to the Graph	19
2.5.9.	Exporting Data to Excel	20
2.5.10.	Export File Settings	20
2.5.11.	Copying the Graph as a Picture	20
2.5.12.	Viewing more than one Data Set on the Graph	20
<b>2.6.</b>	<b>Analysis Tools</b>	<b>21</b>
2.6.1.	Setting the Analysis Tools Parameters	21
2.6.2.	Histogram	22
2.6.3.	Pasteurization	22
2.6.4.	Statistics	23
<b>2.7.</b>	<b>Toolbar Buttons</b>	<b>23</b>
2.7.1.	Main (Upper) Toolbar	23
2.7.2.	Graph (Lower) Toolbar	24
<b>MICROLITE SPECIFICATIONS</b>		<b>25</b>
<i>MicroLite Hardware</i>		<b>25</b>
<i>MicroLab Lite Software</i>		<b>26</b>
<b>APPENDIX: FIGURES</b>		<b>27</b>

# Introduction

The MicroLite is a compact 16-bit USB data logger designed for accurate temperature monitoring for a wide range of applications. Due to its low cost, the MicroLite can be used as a *One Trip Logger*, for monitoring temperature of perishable goods during transportation, for example. Other typical applications include warehousing of food, monitoring of controlled environments i.e. in the pharmaceutical industry, and many more.

- Chapter 1 of this user guide details the operational procedures for MicroLite as a standalone device.
- Chapter 2 provides instruction on how to work with the MicroLite software, MicroLab Lite.

## Contacting Fourier Systems technical support:

**e-mail:** [support@fouriersystems.com](mailto:support@fouriersystems.com)

**Web:** [www.fouriersystems.com/support/contact\\_support.php](http://www.fouriersystems.com/support/contact_support.php)

**Voice:**

(USA) 1-866-771-6682 (Toll Free within USA only)

**For Troubleshooting and FAQs visit the website at:**

<http://www.fouriersystems.com/support/faq/>

**To download updated versions of the MicroLab Lite software and MicroLite User Guide, visit:** [www.fouriersystems.com/support/download\\_center.php](http://www.fouriersystems.com/support/download_center.php).



# Chapter 1

## Using the MicroLite

### 1.1. Overview

The MicroLite can be used as a standalone device to monitor temperature levels. The MicroLite LCD screen continuously displays the current temperature recordings and the maximum and minimum temperature readings. You can also define minimum and maximum alarm levels for a specific data logging session, and the LCD screen will also show any alarm levels that may have been breached as well as the duration of the alarm.

The data stored by MicroLite can be easily downloaded to any computer for further viewing and analysis using the MicroLab Lite software, and can also be exported to an Excel spreadsheet.

### 1.2. Getting Started

The MicroLite data logger you have purchased is shipped in a plastic box with a Quick Start Guide printed on the rear of the box.

The box contains one MicroLite data logger and one small magnet accessory (located in the placeholder on the MicroLite packaging). Read more about the purpose of this magnet in section 1.6.3 on page 6.

In order to save battery life, MicroLite is shipped in *Stop Mode*. This means that before you can start recording, you must first connect MicroLite to the PC and set it up with the MicroLab Lite software (downloaded from the Fourier Systems website – see section 2.2: Software Installation on page 8).

To set up MicroLite with the MicroLab Lite software, refer to section 2.3.1: Setting up the MicroLite on page 10. Once MicroLite receives the Setup command, it begins logging the temperature data immediately or waits for a predefined time to start logging.

### 1.3. Reading the MicroLite Display

The MicroLite has a 3-digit (with one decimal place) 7-segment LCD screen, which is able to display the following information:

- The temperature reading currently recorded
- The lowest and highest temperature recorded to that point
- Low and/or high alarm level breach
- Duration of low and/or high alarm level breach
- Low battery warning

### 1.3.1. Data Displays

The LCD displays the data in a continuous cycle, alternating in duration according to the order shown in the table below:

Time on Screen (seconds)	Data Reading	Example of Reading on Screen
8	Temperature (in Celsius or Fahrenheit)	25.5 °C
2	Low alarm duration *	<sup>AL-L</sup> 1.55H
2	High alarm duration *	<sup>AL-H</sup> 1.05H
2	Minimum temperature reading	<sup>MIN</sup> 23.2 °C
2	Maximum temperature reading	<sup>MAX</sup> 30.1 °C
2	Low battery warning *	BATT LO

\* If relevant (only displayed in event of alarm/low battery)

#### Current Temperature Reading

This is the last temperature reading recorded by the MicroLite. If the sampling interval is once per second, then the reading will be updated for each of the four seconds it displayed on the LCD. Therefore you will be looking at the actual temperature recorded at that very moment.

#### MicroLite Alarm

MicroLite displays an alarm notification whenever any alarm level is exceeded.

- **AL-L** – The temperature reading is *lower* than its low alarm level (as defined in the logger Setup).
- **AL-H** – The temperature reading is *higher* than its high alarm level (as defined in the logger Setup).

The alarm notification remains until the next time you download data to a PC.

To learn how to set alarm levels, refer to page 10.

The alarm duration on the logger's LCD is calculated in hours. For example, the shortest possible duration of 0.01 hours means the logger has been in alarm for between 0 and 36 seconds.

A duration of 1.55 hours means the logger has been in alarm for 93 minutes.

If the MicroLite is in a Low and High alarm simultaneously, then it will show the duration for both alarms.

**Note:** When the MicroLite is in Cyclic mode, the Low or High alarm level displayed represents the lowest or highest readings recorded since the MicroLite starting logging data, irrelevant of how many cycles the logger has recorded.

### **Minimum and Maximum Temperature Readings**

The logger display automatically scrolls through the Min/Max temperature readings while sampling.

These readings are simply the minimum and maximum temperature values recorded by the MicroLite up until that point. If your logger has breached an alarm level, look at the MIN and MAX readings to see the extent of the low or high alarm level breach.

These readings are constantly updated.

## *1.4. MicroLite Working Modes*

MicroLite is always set in one of five possible modes. These modes are all activated via the MicroLab Lite software.

### **Stop**

MicroLite is idle and is not recording.

When pressing **Stop** in the MicroLab Lite software, the logger LCD immediately ceases to record data, instead displaying **STOP** and scrolling through the alarm durations (if alarms were previously recorded).

### **Run**

MicroLite is recording data. It will stop recording automatically when its memory has reached full capacity (8,000 or 16,000 samples depending on the model).

### **Cyclic Run**

Similar to Run mode, but MicroLite will continuously sample data, recording over old data when the memory reaches its capacity, beginning with the earliest data recording.

### **Timer Run**

MicroLite can be configured to start recording at a predetermined time. When MicroLite is set for such a run, its status is set to Timer Run. The logger LCD displays **tRUN**.

### **Push to Run**

MicroLite will only begin logging data when the user operates the logger's reed switch with the MicroLite magnet. The logger LCD displays **PUSH**. See section 1.6.3 on page 6 for more details.

## *1.5. USB Port Connection*

The MicroLite interfaces with the computer via any of its USB Host ports. In order to be detected by the computer and by the MicroLab Lite software, the USB driver must *first*

be installed. USB driver installation is part of the software installation (see section 2.2: Software Installation on page 8).

### MicroLite LCD Status when Connected to USB

The USB connection status is always displayed on the MicroLite LCD when connected or disconnected from a USB port.

The LCD flashes **USB ON** once when connected and flashes **USB OFF** once when disconnected from the USB port.

The logger LED (located adjacent to the logger's USB connector) also lights up green when connected to the USB port.

If the MicroLite is in **Run** mode when connected to the USB port, the LCD will only display the current temperature reading and will not scroll through the other readings.

If the MicroLite is in **Stop** mode when connected to the USB port, the LCD will display **STOP**. If the logger had recorded an alarm during the previous data logging session, then the LCD will also scroll through the alarm durations.

### 1.6. The MicroLite Battery

The MicroLite runs on a standard 3V CR2032 lithium battery.

The battery maintains the MicroLite's Real-Time Clock (RTC). The logger's time/date settings are synchronized with the PC when you perform a Setup. Removing the battery will return the logger's time/date settings to the default of 01 Jan 2004.

#### 1.6.1. Battery Level

The MicroLite battery level indication is provided in the MicroLab Lite software's Setup dialog (see page 10).

The MicroLite battery's maximum lifespan is approximately two years. This long battery life is achieved by the MicroLite putting itself *to sleep* between data recordings. While in sleep mode, the data logger consumes a minimal amount of power.

MicroLite will *wake up* for a few micro-seconds whenever it has to record a data sample or display new data on the LCD screen.

#### 1.6.2. Replacing the Battery

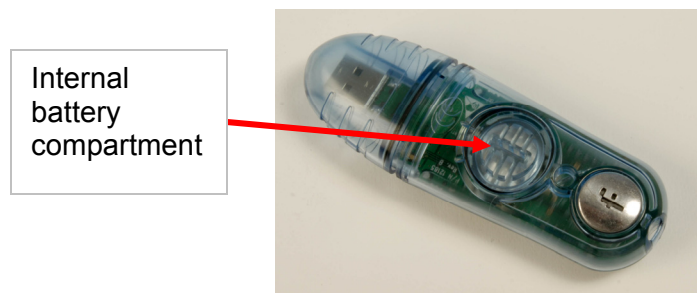
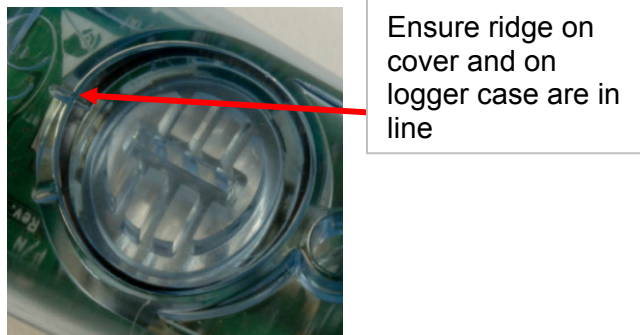


Figure 1: MicroLite battery compartment



As shown in the figure above, the MicroLite internal lithium battery is located under a removable plastic cover.

To replace the battery, simply use the groove in the plastic cover to twist the cover open, and pull out the battery. When twisting the cover back into position, ensure that the small ridge on the battery cover is in line with the similar ridge on the logger case, as indicated in the figure below.



**Figure 2: Closing battery compartment**

**Note:** Be sure to twist the plastic cover properly back into a sealed position, to maintain the MicroLite's dust and waterproof IP68 compliancy.

As stated previously, replacing the battery will lose the MicroLite's time/date settings. These can be restored the next time you Setup the logger using MicroLab Lite.

After replacing the battery, the MicroLite LCD will display PUSH, indicating it is in Push to Run mode.

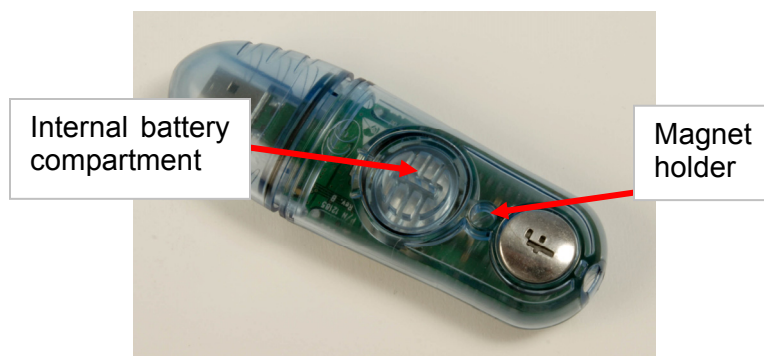
Once you connect the logger to the PC's USB port, you will be able to run the logger without the need for the magnet.

In addition, you will still be able to download the data previously recorded onto the MicroLite, before you removed the battery. This data is not lost.

### 1.6.3. Using the MicroLite Magnet

The MicroLite includes the magnet accessory (stored in the magnet placeholder in the MicroLite packaging).

This magnet is used to activate the logger when in **Push to Run** mode. There is a reed relay on the MicroLite's circuit board which is closed using the magnet, thereby activating the logger.



**Figure 3: MicroLite magnet holder**



To activate the MicroLite when in **Push to Run** mode, place the magnet inside the small holder next to the battery compartment for two seconds, and then remove the magnet. The MicroLite LCD will immediately move to Run mode and live temperature data will be displayed.

# Chapter 2

## MicroLab Lite

### 2.1. *MicroLab Lite Software Overview*

The **MicroLab Lite** software was designed to allow for the programming of the desired data recording specifications for MicroLite, to enable the downloading of recorded data to a PC, and to store, view and analyze the data.

The **Logger** menu handles all communication between the PC and MicroLite, such as programming the desired recording mode, starting or stopping data recording, as well as downloading the data.

The **View** menu controls the various data display options. Data can be viewed in graph format, in table format, or in both. The **Data Map** is a separate pane that displays a list of the open data sets. It can also be used to quickly navigate through the data sets.

The **Graph** menu contains all the commands needed to format and edit the graph.

The most common tasks and commands are available as buttons on the **main toolbar** and on the **graph toolbar**.

### 2.2. *Software Installation*

#### 2.2.1. **System Requirements**

To work with MicroLab Lite your system should be configured with the following:

##### **Software**

- Windows 2000, Windows XP, Server 2003 and Vista
- Internet Explorer 5.0 or higher

##### **Hardware**

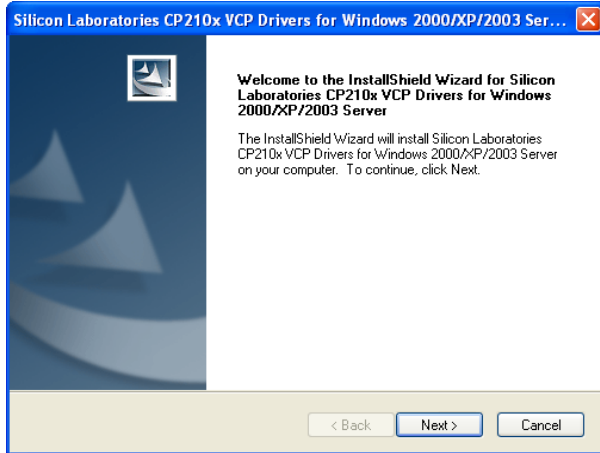
- Pentium 200 MHz or higher
- 32 MB RAM (64 MB recommended)
- 5 MB available disk space for the MicroLab Lite application

#### 2.2.2. **Installation Procedure**

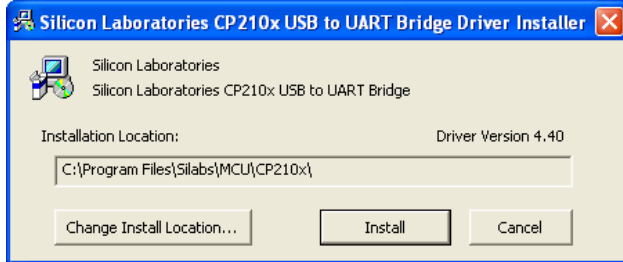
**Note:** Do not connect the MicroLite to the computer until installation of software and USB driver is complete.

1. Browse to the Fourier Systems website and download the MicroLab Lite software. ([http://www.fouriersystems.com/support/download\\_center.php](http://www.fouriersystems.com/support/download_center.php))  
You may either:
  - a. Click **Save** to save the **MicroLabLite\_setup.exe** file to your PC and then double click the file icon to launch the Installation Wizard.
  - b. Click **Run** to install the software directly from the Fourier Systems website.
2. The MicroLab Lite software will first be installed. Follow the on-screen instructions to continue the installation process.
3. Once the MicroLab Lite software has been installed the Silicon Laboratories USB driver installation will begin automatically. The driver is required in order for the computer to detect the MicroLite logger.

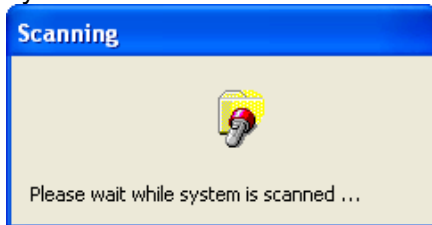
4. Follow the on-screen instructions to continue the installation process. The default installation location is C:\SiLabs.



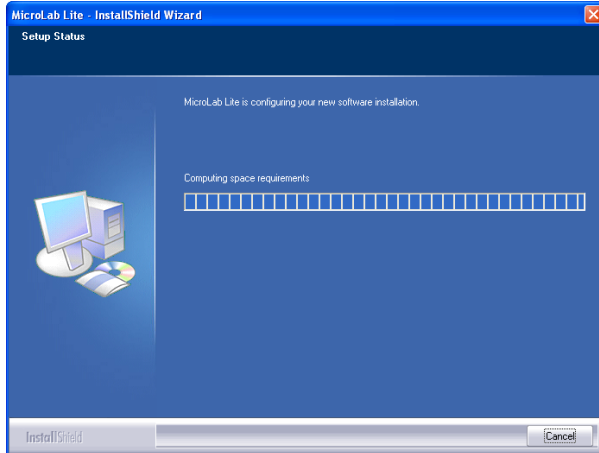
5. When the following dialog pops up, click **Install**.




6. The installation of the driver could take up to one minute or more, depending on the system.



7. Once installed, click **Finish** to close the USB driver Install Wizard dialog.
8. The main MicroLab Lite InstallShield Wizard now resumes.



9. After a few more seconds, the installation process is completed. Click **Finish**.
10. Connect the MicroLite to a USB port on your PC. The PC will automatically detect the MicroLite as new hardware. After a few seconds you will see a message stating that the device is ready for use.
11. Double click the MicroLab Lite shortcut on your desktop  to launch the software. If the MicroLite is connected to the PC the software will automatically detect it.

## Troubleshooting

*When connected to the PC USB port the MicroLite was not detected by the software.*

Ensure that the USB driver was installed properly.

If it is, then the MicroLite LED will light green when connected to the USB.

Go to **Control Panel > Add/Remove Programs** (in WinXP), and check that the driver is installed:




If not, you must rerun the MicroLite setup.exe to install the driver.

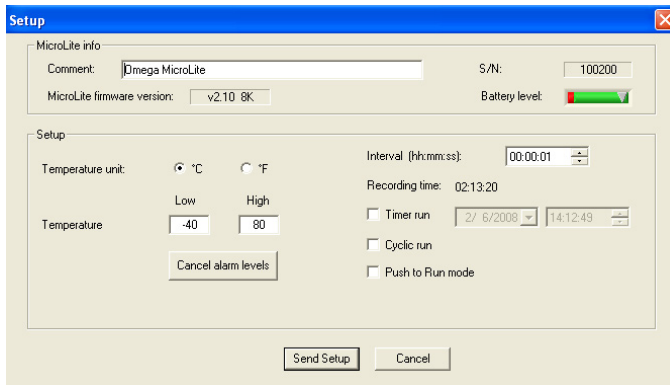
If the driver is installed, ensure that there is no other device sharing the USB com port with the MicroLite.

## 2.3. Getting Started

### 2.3.1. Setting up the MicroLite

Use the **Setup** dialog box to view or change the MicroLite settings.

1. Connect MicroLite to the PC.
2. Click **Setup**  to open the **Setup** dialog box.



**Figure 4: Logger Setup dialog box**

The dialog box consists of two main sections:

- **MicroLite info**

*Comment*

Click the text box and type a name that will serve to identify the specific MicroLite (e.g. its location).

*S/N*

Displays the MicroLite's serial number.

*Battery Level*

Shows the current status of the MicroLite battery. If the indicator is in the red zone the battery should be replaced.

*MicroLite firmware version*

Displays the firmware version and the memory capacity, either 8K (8,000) or 16K (16,000) samples.

- **Setup**

*Temperature unit*

To set the temperature unit in the MicroLite display, select the option you want (Celsius or Fahrenheit).

*Temperature alarm*

Type in the desired Low and High alarm levels. If the MicroLite records a reading that exceeds either of these levels, the MicroLite's LCD will display an alarm notification.

The default alarm levels are the lower and upper ends of the temperature sensor range. Click **Cancel Alarm** to restore the default levels.

*Interval*

This determines the logging interval, or the time interval between successive data recordings.

The time format is hh:mm:ss. Set the time setting to select a recording time interval from **1 second to 2 hours**. For example, to set a time interval of one hour, five minutes and thirty seconds, click the hours (hh) and type 1 or use the arrows to select 01. Click the minutes (mm) and type 5 or use the arrows, and finally,

click the seconds (ss) and type 30 or select 30 using the arrows.

#### *Recording Time*

Displays the total recording time according to the logging interval selected.

#### *Timer run*

Select the **Timer run** check box if you want MicroLite to start recording at a predetermined time. This option is convenient if you are using several MicroLite at once and want them to all begin logging at the same time.

Use the time and date selectors to set the start time.

#### *Cyclic run*

In **Cyclic run** mode, the MicroLite overwrites the old measurements (starting with the oldest recorded data) once the MicroLite's memory is full. Click the **Cyclic run** check box to operate in this mode.

If the check box is unselected, MicroLite will operate in **Normal run** mode and will stop recording when the memory is full.

#### *Push to run*

In **Push to run** mode, the MicroLite will only start recording data when you use the MicroLite magnet to close the reed relay on the MicroLite's circuit board, thereby causing the logger to start recording data. This is convenient for when you wish to start recording data soon (but not immediately) following setup, or at an unspecified time.

### 2.3.2. Completing the Setup


Click **Send Setup** to send the new settings to the MicroLite and begin recording. This will complete the setup. Click **Cancel** if you do not wish to change the setup at this stage.

**Note:** The **Send Setup** command erases all existing data in the MicroLite.

If you select **Timer run** mode, MicroLite will wait in standby mode, displaying **tRUN**. It will begin recording at the specified time.


If you select **Push to Run** mode, MicroLite will also wait in standby mode, displaying **PUSH** until the magnet is used to start the logger.

### 2.3.3. Starting Data Recording

Click **Run**  every time you want to start a new recording. The **Run** command erases all previous data in the MicroLite memory and begins recording.

**Note:** If you setup the MicroLite using the **Setup** command, it will automatically begin recording, and you don't have to click **Run**.

### 2.3.4. Stopping Data Recording

Click **Stop**  to stop recording. In Stop mode, MicroLite keeps all recorded data but does not record new data. Use this mode to save battery power.

### 2.3.5. Temperature Sensor Calibration

A new MicroLite comes fully calibrated. After a long period of use however, you may want to recalibrate the Temperature sensor.

The calibration is made directly to the MicroLite firmware i.e. the calibrated data is displayed on the logger LCD, not just in the software following data download.

Calibration must be carried out while MicroLite is connected to the PC.

#### Calibration Password

To prevent accidental change of the calibration, the calibration procedure is protected by a password.

**The default password is: 1234.**

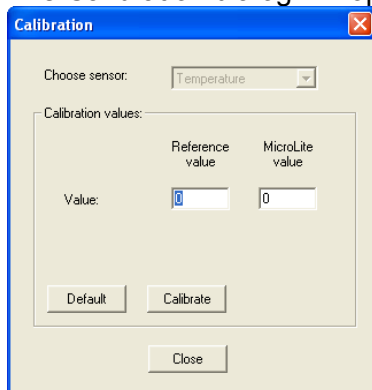
To change the password:

1. Click **Logger** on the main menu, and then click **Calibration**.
2. Click **Change Password** to open the **Change Password** dialog box.
3. Enter the current password in the **Current Password** field.
4. Enter the new password in the **New Password** field.
5. Enter the new password a second time in the **Confirm New Password** field to confirm your new password.
6. Click **OK**.

**Note:** The password must include at least 4 characters and is **case sensitive**.

#### Temperature Calibration

1. Connect the MicroLite to the PC.
2. Click **Logger** on the main menu, and then click **Calibration**.
3. Enter the calibration password, and then click **OK**.
4. The Calibration dialog will open.



**Figure 5: Calibration dialog box**

5. Enter the Reference value: this is the temperature value you expect the logger to display.



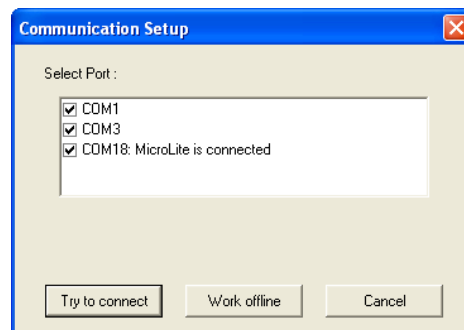
6. Enter the MicroLite value: this is the temperature value the logger is currently displaying, when compared with the reference value.
7. Click **Calibrate**.

To restore default calibration, click **Default**. This will remove any calibration applied to the MicroLite.

### 2.3.6. Communication Setup

Communication between the PC and the MicroLite unit takes place automatically whenever you send a command to the MicroLite. However, the Communication Setup dialog box can be used for more advanced communication options.

Click **Logger** on the main menu and select **Com setup** to open the **Communication Setup** dialog box:




**Figure 6: Communication Setup dialog box**

The selected COM ports are available for communication.

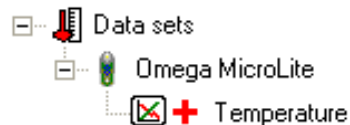
1. Click **Try to connect** to establish communication.
2. Click **Work offline** to work with saved files and no logger detection is required.

**Note:** You can speed up the MicroLite detection process by only selecting the COM which is being used by the MicroLite.

### 2.3.7. Downloading Data

1. Connect MicroLite to the PC.
2. Open the MicroLab Lite software.
3. Click **Download**  on the main toolbar.

The MicroLite will first be detected and then the download will begin. Once the data has been downloaded, it will be displayed both in the graph and in the table, and a new data icon will be added to the Data Map:



You can now connect a different MicroLite to the PC and download its data as well. The number of downloads is limited only by the memory available on the computer. Use the Data Map (refer to page 16) to navigate between the different data sets.

### 2.3.8. Saving Data

To save the displayed data, click **Save**  on the main toolbar. The data currently displayed by the graph will be saved in the MicroLite Data folder:

*C:\Program Files\Fourier Systems\MicroLab Lite\MicroLite Data*

The data file name consists of the MicroLite name (Comment, refer to page 11) and of the time and date at which it was saved.

To save data in a different location or under a different name, use the **Save as...** command from the File menu:


1. Select **Save as...** from the **File** menu.
2. Enter a new name in the File name box.
3. To save the data in a different folder, select a drive and/or folder from the **Save in** dialog box.
4. Click **Save**.

If you've downloaded data from more than one MicroLite and you want to save all the data sets, select **Save all** from the **File** menu.

**Note:** If you want to remove unwanted data before saving, apply the Crop tool (refer to page 19).

## 2.4. MicroLab Lite Basics

### 2.4.1. Opening Files


1. Click **Open**  on the main toolbar.
2. To open a file that was saved in a different folder, select a drive and/or folder in the **Look in** dialog box.
3. Double-click the file you want to open.

### 2.4.2. Displaying Properties

You can change the way numbers and dates will be displayed on screen.

1. Click **File** on the main menu, and then click **Display properties**.
2. Under **Decimal place settings**, enter the number of decimal places you want to display (enter a number between 0 and 4) for each sensor.
3. Under the **Date format settings**, select the desired format option.
4. Click **OK**.


### 2.4.3. Printing a Graph

1. Click **Print**  on the main toolbar to open the **Print Options** dialog box.
2. Click the **Graph** option.
3. Click **Print** to open the **Print** dialog box.
4. Click **OK**.

### 2.4.4. Printing a Table

The displayed data can also be printed as a table. The printed table will include data from all MicroLite's that are currently represented on the graph (to learn how to add or remove data sets from the graph, refer to page 16) as well as the MicroLite name, serial

number and the alarm level setup. Data that exceeds any of the alarm levels will be highlighted by arrows.


1. Click **Print**  on the main toolbar to open the **Print Options** dialog box.
2. Click the **Table** option.
3. If you want to print only part of the data, uncheck the check box and select the desired time and date in the *From* and *To* boxes.
4. Click **Print** to open the **Print** dialog box and click **OK**.

## 2.5. Viewing the Data

### 2.5.1. Display Options


MicroLab Lite's main window consists of three parts: the **graph**, the **table** and the **Data Map**. You can display all three parts simultaneously (the default view) or any combination of them.

#### Graph

Click **Graph**  to display or remove the graph. The graph displays the data sets plotted vs. time.

In order to keep the graph clear and simple, only two Y-axes can be shown on the graph simultaneously. If there are three curves in the graph, one of the Y-axes will be hidden. To make this axis visible, select the corresponding plot with the cursor (refer to page 17). You can identify the Y-axis by its color, which matches the plot color.


#### Table



Click **Table**  to display or remove the table. The data in the table always matches the data that is currently displayed on the graph.


#### Data Map

Click **Data Map**  to display or remove the Data Map.

The Data Map is a separate window that displays the list of data sets that were downloaded or opened in the current session. Use the Data Map to navigate through the available plots and to keep track of the data that is displayed in the graph and/or table windows.

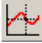
When you double-click on a MicroLite icon  in the Data Map, MicroLab Lite jumps to the corresponding data and displays it in the graph and table windows. It also expands the Data Map to show the Temperature sensor data set.

- A graph icon  indicates that the data set is currently being displayed. Double-click on the icon to clear the data set from the display.
- An empty icon  indicates that the data set is not being displayed. Double-click on the icon to add the data set to the display.
- To collapse the sensor list under an individual MicroLite, click the minus sign (-) next to the MicroLite icon.
- To expand the sensor list under an individual MicroLite, click the plus sign (+) next to the MicroLite icon.

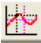
- To remove an individual MicroLite from the Data Map, right-click on its icon, then click **Remove data**.
- To remove all data sets from the Data Map, right-click the Data Sets icon , then click **Remove all data**.

### 2.5.2. The Cursor

Use the cursor to view individual data recording values, or to reveal a hidden Y-axis. MicroLab Lite enables you to display up to two cursors simultaneously.


To display the first cursor, double-click on an individual data point or click **Cursor**  on the graph toolbar. You can drag the cursor with the mouse to any other point on the plot, or to another plot altogether.

The point coordinates of the selected data recording will appear in the status bar at the bottom of the graph window.

To display a second cursor, double-click anywhere on the graph or click **Second cursor**  on the graph toolbar.

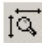
### 2.5.3. Graph Features

#### Zooming

Click **Zoom in**  on the graph toolbar and drag the cursor diagonally to select the area you want to magnify. Release the mouse button to zoom in to the selected area.

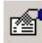
Click on the **Zoom in** button a second time to turn off the Zoom tool.

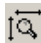
#### Autoscale

Click **Autoscale**  on the graph toolbar for the full data display.

Double-click on an individual axis to auto scale it separately.

#### Manual scaling

1. Click **Graph properties**  on the graph toolbar to open the **Graph Properties** dialog box.
2. Select the **Scale** tab, and choose the axis you want to scale in the **Select** axis drop-down menu.
3. Unselect the **Auto scale** check box and enter the new values in the value fields.
4. In the time axis, you can either enter the time and date manually, or select it with the up and down arrow buttons.
5. Click **OK**.

To restore auto scaling, click **Autoscale** .

#### Default zooming

If you usually need to view a specific time frame (i.e. workday hours), use the Default zooming tool. You can set the start and end time of the time span and then use it whenever you open a file or download data from the MicroLite.

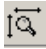
#### To set the default zoom:

1. Click **Graph Properties**  on the graph toolbar, and then click **Set Default Zoom**.
2. Enter the start and end times, then click **Set**.

**To zoom to the default zoom:**

1. Click **Graph Properties**  on the graph toolbar.
2. Check the **Use default zoom** check box and click **OK**.

Every file and every data recording you download will automatically open in the default zoom as long as the **Use default zoom** check box remains selected.


To restore auto scaling, click **Autoscale** .

**The Stretch/Compress Axis Tool**

Move the cursor onto one of graph axes. The cursor icon changes to a double arrow symbol ( $\leftrightarrow$ ), indicating that you can stretch or compress the axis scale. Drag the symbol to the desired location. Repeat the procedure for the other axis, if necessary.

## Panning

Use the pan tool after zooming any part of the graph that is outside the zoomed area.

To do so, click **Pan**  on the graph toolbar, then click anywhere on the graph and drag the graph to view another area.

Click **Pan** a second time to turn off the Pan tool.

### 2.5.4. Cropping the Data


Cropping enables you to trim the edges of a data set. Use it to remove unwanted data.

1. Zoom to the data range you want to keep.
2. Click **Graph** on the menu bar, and then click **Crop**.  
All data outside the zoomed area will be **permanently** removed.

### 2.5.5. Formatting the Graph

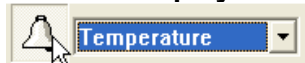
You can change a data line's color, style or width. You can also add markers that represent the data points on the graph and format their style and color.

The Y-axis color matches the corresponding plot's color and will change accordingly. The Time axis color can be changed separately:

1. Click **Graph properties**  on the graph toolbar to open the **Graph Properties** dialog box.
2. Select the **Lines** tab, and then select the plot or axis you want to format in the **Select plot** drop-down menu.
3. From here, you can format the line's color, style and width, as well as the markers' color and style. To remove the line or the marker, uncheck the corresponding visible check box.
4. To restore the default formatting, click **Restore default**, and click **OK**.

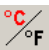
### 2.5.6. Displaying Alarm Levels

Click the **Display Alarm Level** icon on the main toolbar



to enable the Temperature alarm levels to be displayed on the graph.

### 2.5.7. Changing the Temperature Units


Click **Toggle °C/°F** button  to change the temperature scale from Fahrenheit to Celsius and vice versa.

**Note:** To change the units in the MicroLite display, use the **Setup** dialog box.


### 2.5.8. Adding Annotations to the Graph

MicroLab Lite allows you to add annotations to the graph. An annotation is always attached to a specific data point.

*To add an annotation:*

1. Place the cursor on the point to which you want to add the annotation.
2. Click **Add new annotation**  on the graph toolbar
3. Type the annotation in the **New annotation caption** text box.
4. Click **OK**.

*To move an annotation:*

1. Click **Move annotation**  on the graph toolbar
2. Drag the annotation to any location on the graph you choose.
3. Click **Move annotation** a second time.

*To edit an annotation:*

1. Place the cursor on the point to which the annotation is attached.
2. Click **Graph** on the menu bar.
3. Click **Edit annotation**.
4. Edit the annotation in the text box.
5. Click **OK**.


*To delete an annotation:*

1. Place the cursor on the point to which the annotation is attached.
2. Click **Graph** on the menu bar.
3. Click **Delete annotation**.

*To hide all annotations:*

1. Click **Graph** on the menu bar.
2. Click **Show annotations** to uncheck it.

### 2.5.9. Exporting Data to Excel

Click **Export to Excel**  to export the currently displayed data to an Excel spreadsheet. You will be prompted to select the Save location of the file, and then a new Excel workbook will be opened displaying the data along with the MicroLite info, including the MicroLite name, serial number and alarm levels setup. If Excel is not installed on the PC then the data will be exported to a CSV text file.

### 2.5.10. Export File Settings

If MicroLab Lite fails to export the data properly i.e. all of the data is displayed in one row of the worksheet, you can change the export file settings. This ensures that the data is exported using comma separated values (CSV).

1. Click **File** on the main menu, then click **Export file settings**,
2. Select the **Ignore regional settings** check box.
3. Click **OK**.

### 2.5.11. Copying the Graph as a Picture

You can copy the graph to the clipboard as a picture and then paste it into other Windows programs, such as Word and PowerPoint:

1. On the **Graph** menu, click **Copy graph**.
2. Open the destination file.
3. In the destination file, right-click and select **Paste**.

### 2.5.12. Viewing more than one Data Set on the Graph

MicroLab Lite lets you view more than one data set in Graph and Table view at the same time, allowing you to compare the data from several data sets side by side.

**Note:** To use this feature the data sets must have been recorded using the same sampling rate e.g. every 1 minute

There are two modes when using the Multi-graph feature:

**Standard mode**

The time scale of all data on the graph is the same. The time and date of data recorded in the first data set included on the graph is used.

For example, if you have a graph whose data was recorded starting 10:00AM on August 11, then all additional data added to the graph will be displayed with the same recording date.

The MicroLab Lite data table below shows all data in the graph having the same time scale:

		Omega MicroLite	Omega MicroLite 2
	Time (Date)	Temperature (°C)	Temperature (°C)
0	06-Feb-08 13:44:29	27.06	27.22
1	06-Feb-08 13:44:30	27.07	27.23
2	06-Feb-08 13:44:31	27.07	27.23
3	06-Feb-08 13:44:32	27.07	27.22
4	06-Feb-08 13:44:33	27.07	27.22
5	06-Feb-08 13:44:34	27.07	27.23
6	06-Feb-08 13:44:35	27.07	27.23
7	06-Feb-08 13:44:36	27.07	27.23
8	06-Feb-08 13:44:37	27.08	27.23
9	06-Feb-08 13:44:38	27.08	27.23
10	06-Feb-08 13:44:39	27.08	27.23
11	06-Feb-08 13:44:40	27.08	27.23
12	06-Feb-08 13:44:41	27.08	27.23
13	06-Feb-08 13:44:42	27.08	27.23
14	06-Feb-08 13:44:43	27.08	27.23

**Figure 7: MicroLite data table**

**Plot sync mode**

To display data on the graph using the data’s actual time scale i.e. the time and date when the data was actually recorded, use the **Plot sync** feature. This will also shift all data in the data table accordingly.

Once you’ve added the data to the graph, on the **Graph** menu, select **Plot sync** to enable the feature. To return to Standard mode, unselect **Plot sync**.

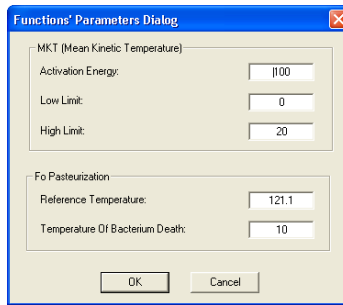
**Note:** The time scale of all data is rounded to the same resolution as the time scale of the original data on the graph.

## 2.6. Analysis Tools

### 2.6.1. Setting the Analysis Tools Parameters

1. Click **Analysis** on the menu bar, then click **Set Functions’ Parameters** to open a dialog box:





**Figure 8: Functions Parameters**

2. Type in the desired parameters, and then click **OK**.

### 2.6.2. Histogram

Use this tool to create a frequency distribution of the selected data set.

To create a histogram:

1. Use the cursor to select a plot on the graph.
2. Click **Analysis** on the main menu bar, and then click **Histogram**.

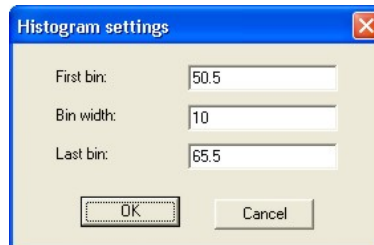
MicroLab Lite displays a histogram of the selected data and creates a new entry in the Data Map.

Use the Data Map (refer to page 16) to hide the histogram or to return to the original data sets.

You can modify the histogram to your needs. You can set the upper limits of the first bin and the lower limit of the last bins, and refine the histogram by increasing the number of bins.

To modify the histogram:

1. Click **Analysis** on the main menu, then click **Histogram** a second time to open a dialog:



**Figure 9: Histogram settings**

2. Enter the desired values for the first bin, the bin width and last bin, and then click **OK**.

You can repeat the process for further modification.

### 2.6.3. Pasteurization

Use this tool to create and display an FO Pasteurization curve:

Click **Analysis** on the menu bar, and then click **FO pasteurization**.

### 2.6.4. Statistics

Use the statistics tool to display statistics of each data set in the graph.

The statistics include:

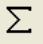
**Minimum** – The smallest value in the data set

**Maximum** – The largest value in the data set

**Average** – The average of all the numbers in the data set

**MKT** – The Mean Kinetic Temperature

To display statistics:











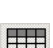

Click **Statistics**  on the main toolbar.


MicroLab Lite will display the statistics in the information bar at the bottom of the graph window.


To hide the statistics, click **Statistics**  a second time.

## 2.7. Toolbar Buttons


### 2.7.1. Main (Upper) Toolbar


	<i>Open</i>	Opens saved files
	<i>Save</i>	Saves the data that is currently displayed
	<i>Print...</i>	Opens the Print Option dialog box
	<i>Export</i>	Exports the displayed data to an Excel spreadsheet
	<i>Run</i>	Begins recording data
	<i>Stop</i>	Stops recording data
	<i>Setup</i>	Opens the Setup dialog box
	<i>Download</i>	Downloads data from the MicroLite onto the PC
	<i>Data Map</i>	Displays or removes the Data Map
	<i>Graph</i>	Displays or removes the graph
	<i>Table</i>	Displays or removes the table
	<i>Statistics</i>	Displays or removes the data's statistics

 °C/°F Displays the desired unit of temperature

 *Alarm* Displays or removes temperature alarm levels from the graph

### 2.7.2. Graph (Lower) Toolbar


 *Add annotation* Adds new annotation to the graph

 *Move annotation* Relocates the annotation on the graph

 *Zoom in* Activates the zoom tool

 *Pan* Activates the pan tool

 *Autoscale* Returns the graph to full view

 *Graph properties* Opens the Graph Properties dialog box

 *Cursor* Toggles the first cursor

 *Second cursor* Toggles the second cursor

# MicroLite Specifications

## *MicroLite Hardware*

### **Models:**

MICROLITE-8 - Temperature sensor; 8,000 sample memory  
MICROLITE-16 - Temperature sensor; 16,000 sample memory

### **Internal Temperature sensor:**

Range: -40 °C to 80 °C  
Resolution: A/D resolution:  
16-bit, 0.1°C  
Accuracy (all ranges): 0.3 °C  
Response time: ~ 20 minutes  
(Thermal conductor enabling fast response time)  
Software calibration is possible

### **Outputs:**

3-digit 7-segment LCD with decimal point  
USB 2.0 interface

### **Memory Capacity:**

8,000 samples or 16,000 samples, depending on MicroLite model

### **LCD Unit Icons:**

°C, °F, AL-H, AL-L, MIN, MAX

### **Power Supply:**

Internal Lithium Battery: 3V, CR2032  
Battery Life: Approximately two years

### **Sampling Rate:**

User defined: From once every second to once every two hours

### **Dimensions:**

11 x 3.9 x 2.6 cm

**Weight:**

45.5 g

**Standards:**

Water and dust proof IP68 standard compliance (Up to half an hour at half a meter water depth)

CE and FCC standard compliance

***MicroLab Lite Software*****Software Features**

- Runs on Windows 2000/ME/XP/VISTA
- Fast data download from the MicroLite
- Graphic visualization of the MicroLite data
- Data displayed in graphs and tables
- Data export to EXCEL
- Graphic analysis tools such as Markers, Zoom
- Setup windows, for setting the MicroLite unit name, sampling rate and alarm level
- Sampling rate: Once every second to once every two hours
- MicroLite sensor calibration
- Display of MicroLite battery level
- Visual alarm levels on the graph and table

**System Requirements*****Software***

Windows 2000 or later

Internet Explorer 4.0 or later

***Hardware***

Pentium 200 MHz or higher

32 MB RAM (64 MB recommended)

5 MB available disk space for the MicroLab Lite application

## Appendix: Figures

FIGURE 1: MICROLITE BATTERY COMPARTMENT	5
FIGURE 2: CLOSING BATTERY COMPARTMENT	6
FIGURE 3: MICROLITE MAGNET HOLDER	6
FIGURE 4: LOGGER SETUP DIALOG BOX	11
FIGURE 5: CALIBRATION DIALOG BOX	13
FIGURE 6: COMMUNICATION SETUP DIALOG BOX	14
FIGURE 7: MICROLITE DATA TABLE	21
FIGURE 8: FUNCTIONS PARAMETERS	22
FIGURE 9: HISTOGRAM SETTINGS	22